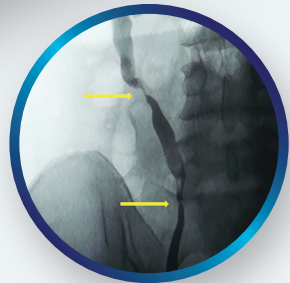


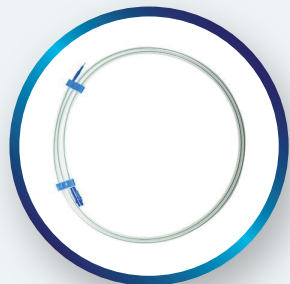
# Allium Quick Guide for URS Implantation



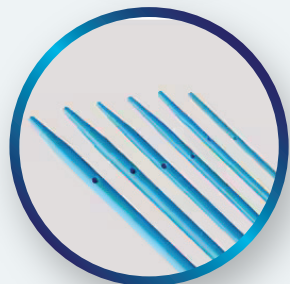
Allium  
Urological Solutions



**1** Measure and  
mark stenosis



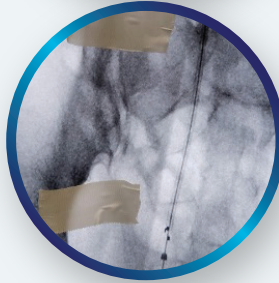
**2** Introduce semi stiff GW  
D=0.035\"/>



**3** Dilate to  
14-15 FR



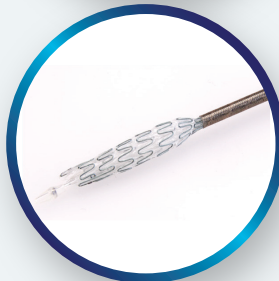
**4** Flush DS with  
5ml syringe  
via luer lock



**5** Introduce stent  
over the GW\*



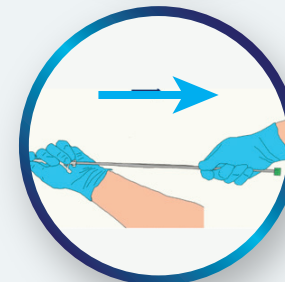
**6** Release  
locking knob



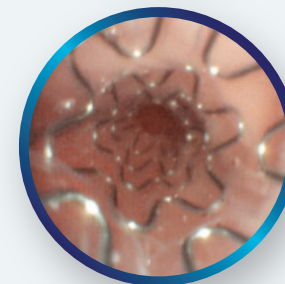
**7** Deploy 2-4 cm  
and reposition  
precisely if needed



**8** Wait  
3 min



**9** Watch the tip on  
X-ray, pull back  
slowly



**10** Verify

\*DS = Delivery system, GW = Guidewire

# Allium Quick Guide for URS Removal



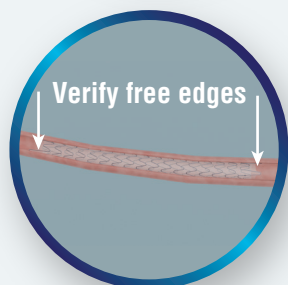
**Allium**  
Urological Solutions



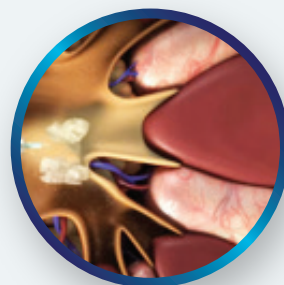
**1** Check patient history e.g. stones



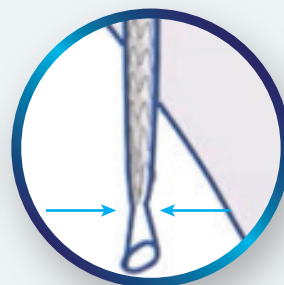
**2** Introduce ureterscope/cystoscope



**3** Investigate Allium URS



If calcified - lithotripsy



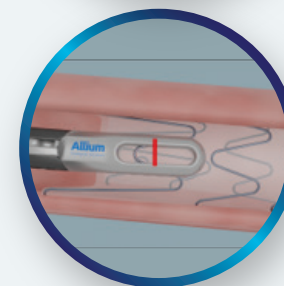
For distal stenosis - dilation below the stent is recommended before removal



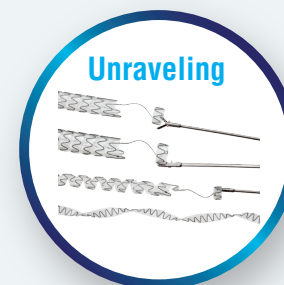
**5** Introduce Alligator grasper



Grasp 2 loops or entire circumference, to remove as monoblock



Grab one distal loop



Unraveling

**7** Stent will be removed as monoblock or unravel

**4**

**6**